



*Newbold Astbury
&
Moreton Cum Alcumlow
November 2025 Newsletter*



*The Parish Council wish you a Merry Christmas and a
Happy New Year!*

In this edition:

Daffodils, Poppies p1, Christmas Celebrations p2, Highways p3, WI page 3 & 4, Roll of Honour p4

Clerk's Corner. P1 A new feature where the Parish Clerk will keep us updated on what's happening in and around the two Parishes.



Left: The Team of Councillors and an ex-councillor were busy planting daffodils to keep brightening up the Parishes in Spring, on the crossroads at Lime Kiln Lane, Fence Lane and Oak Lane on Saturday 25th. October.

Top Right: Poppies were erected around the parishes to commemorate the 80th Anniversary of both VE (Victory in Europe) day on the 8th. May and VJ (Victory in Japan) day on 15th. August 2025.

Top Left: Annual Remembrance Day poppies are scattered around the parishes along with the fallen heroes names inscribed, near to where they were born, resided or were employed. Eg Watery Lane (James Aaron Cartlidge died 29/4/1916, born 1890 and living at Ciss Green Farm, Watery Lane.)



SIDs

Last year the Council decided to purchase a mobile Speed Indicator Device (SID) which can be deployed across the parishes and monitor both the speed and volumes of traffic. We're still waiting for Cheshire East Highways to install poles at different locations to mount the SID on but hopefully we'll be able to tell you in the next Newsletter that this has been done.

Defib

Sadly the damaged phone box housing a defibrillator unit at Ackers Crossing has still not been replaced. It's been a disappointingly drawn out process with the company refurbishing the replacement, though we've been told that the box is now with the company that will remove the old one and install the new one. We'll need to co-ordinate with Scottish Power so they can provide a power supply once the box is in place but again we hope we'll have some more positive news next time.

Audit

Since the last Newsletter we've completed the audit process for Financial Year 24/25. The Internal Auditor gave us a clean bill of health, and since neither our income or expenditure for the year was over £25,000 we were exempt from having to submit our accounts to an External Audit.

Highways

You may have seen on our website some information about the Cheshire East Council new portal - traCE - for reporting any problems such as fly-tipping, potholes, defective streetlights etc. The intention is that this new system will streamline and speed up the way in which such problems are dealt with and the problems rectified. The system is having a few teething troubles so please do please give Cheshire East Council any feedback you have so they can improve the system.

Planning

You may also have seen the Cheshire East Council's new-ish Planning Portal on their website. This too is having some teething troubles and we've been working with our friends in several neighbouring parishes to pool information and provide constructive feedback on how they could do things better. Some of the issues are technical but others seem to be policy choices, such as deleting any representations made on an application once the planning decisions have been taken. Feel free to let us know if you too are experiencing any problems with the system.

ASTBURY LIVE NATIVITY



Monday
15th December



Adult - £6
Under 16 - £3
Family 2+2 - £15

Tuesday
16th December



Entry by pre-booked ticket only
Available online Small booking fees apply

Scan QR codes here or
visit astburychurch.org.uk



6.00 for 6.30pm at Glebe Farm CW12 4RQ

JOY

WELCOME TO THE ASTBURY LIVE NATIVITY

Why not start your celebrations this year with the true meaning of Christmas? Join us for Astbury's Live Nativity, a much-loved community event, looked forward to each year as the highlight of the season.

Our journey begins at Glebe Farm where we are greeted by the Centurion who orders us to go to Bethlehem.

We follow the star through the village in the footsteps of Mary, Joseph and their faithful donkey so that we too become part of the story of the first Christmas. We are guided on the way by some smelly shepherds and angels encourage us to keep going. A grumpy inn-keeper tells us there is no room at the inn. Don't let him put you off ... Bethlehem is in sight! We sing carols to keep our spirits up and anticipate with excitement who we shall find at the end of our journey. The stable scene in church awaits us and we watch the arrival of the three Kings as they bring their gifts. Once again, the age-old story is complete, and we raise our voices together to welcome the Christ-child. As we refresh ourselves with hot chocolate or mulled wine and a mince pie, we can rest assured that we have remembered and celebrated the real reason for the season.

We meet at Glebe Farm from 6pm, ready to start our journey at 6.30 pm.

Pre-booking is essential for this event. Tickets are available from the online booking page.

Use the QR codes on the poster

Visit the website at astburychurch.org.uk

Click the date links below or copy the web address

For **15th December**

[https://
tickets.myknowchurch.co.uk/gb/
NTU5OS0xMA/t](https://tickets.myknowchurch.co.uk/gb/NTU5OS0xMA/t)

For **16th December**

[https://
tickets.myknowchurch.co.uk/gb/
NTU5OS0xMQ/t](https://tickets.myknowchurch.co.uk/gb/NTU5OS0xMQ/t)

Adult tickets are £6 each, under 16's tickets are £3 each

A Family ticket for two adults and two children is £15

Small booking fees apply. Tickets are non-refundable and non-transferable

If you are unable to book online, tickets may be purchased at church after any 11am Sunday service.

AN INVITATION TO SHARE THE JOY OF CHRISTMAS AT ST MARY'S

Sun 14th December	2.30pm	Somerford Chapel Carols
Mon 15th December	6.00 for 6.30pm	Astbury Live Nativity*
Tues 16th December	6.00 for 6.30pm	Astbury Live Nativity*
Sun 21st December	6.30pm	Carol Service
Christmas Eve	5.00pm	Crib Service
	11.30pm	Midnight Mass
Christmas Day	10.00am	Family Christmas



For more details about all our services,
see astburychurch.org.uk and [@StMarysAstbury](https://www.facebook.com/StMarysAstbury)



THE CHURCH OF ENGLAND

*Booking is essential for Live Nativity - book tickets online
Use the QR code here for the booking links on our website


We are on hand to make sure our network is **safe, functional and available**.

Reporting through our **official channels** ensures that your reports are dealt with efficiently and allows us to **provide accurate and timely responses** on any action taken.

You should use the following:

Reporting an emergency



To report any issues that presents an **immediate danger**, call us on **0300 123 5020** during working hours, or out of working hours on **0300 123 5025**. 

Ringing emergencies through makes us aware at the earliest opportunity and allows us to **act fast**



Existing highways infrastructure - FixMyStreet

To report a repair or replacement of existing items like streetlights, potholes, and damaged kerbs, submit a maintenance request using [traCE](#).

For anything you cannot report through the reporting tool, you can email

CheshireEastCouncilCustomerServices@CheshireEast.gov.uk or, you can call the team on 0300 123 5020.

Complaints



If after logging your request you are not happy with the response you have received or what has been done then you can raise an official complaint via


LetUsKnow@CheshireEast.gov.uk



Webpages

Our designated highways **webpages** provide information on improvements in your area, key network information, service information and more:

 [Roadworks and travel disruption](#)

 [Gritting and snow clearance](#)

 [Road repair programme](#)


 [Road safety](#)

 [Road gullies and drains](#)

Subscribe to our quarterly newsletter...

Our newsletter contains the latest highways news and updates.

You can subscribe to receive a copy directly to your email inbox here:

<https://public.govdelivery.com/accounts/UKCHESHEC/subscriber/new> 

Astbury WI Press Report AGM 2025



It is all change at Astbury WI. At our AGM on Wednesday November 5th, we celebrated with the traditional Pea and Pie supper, and a beautiful 85th birthday cake made by Carol Steer and iced by Dotty Kallis.

The meeting began with a tribute to two members who had recently passed away. A minutes silence was observed for Yvonne Walker and Cynthia Garside, who had both been valued members of our WI family. Margaret Pearson was retiring after 10 years as president and Kate Naylor was elected to the role. Ann Beckett our adviser led the election process, and we all wish Kate well in her new role. We began the meeting with the usual monthly business which included a special birthday buttonhole for Carolyn Livesley who also received a certificate congratulating her on 30 years of membership. Four new members were welcomed and received their new member's packs.

Bowls cups were presented.

Novice Cup; Kate Naylor

Singles Cup; Anita Thompson

Finally in the AGM section of the meeting, Secretary Liz read the minutes of the 84th AGM

Annette our treasurer, presented the financial statement,

Liz then gave the Annual Report.

Then Margaret gave her final President's Address. She said,

"Usually, my President's address reads like a thankyou letter to my fellow committee members. Those thankyou's are so very relevant this year."

However, because it was the last address she would give as President, She felt the need to be slightly more reflective.

She looked back on her ten years as President of Astbury WI with huge pride yet with humility.

For any President achieves success, only with the help and support of her team.

Margaret went on to say:

"I have been privileged to lead the committee through a memorable ten years. Not least because of that scary period five years ago when we could not meet at all.

We were forced to find other ways of keeping in contact. I shall be forever grateful to Liz, Lisa and Kath Wainright who helped me to steer our WI through that isolating period.

Sadly, like Kath, many of the original team are not around to hear my thanks. Talented and devoted committee members like my much-missed friend Glenys Whiston and Sheelagh Steele, who were responsible for galvanising us into action to create the bunting and the banner to mark our 75th anniversary when Catherine Pedley passed on the mantle to me."

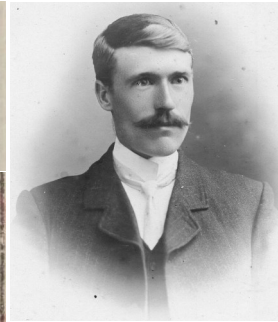
After the election of Kate as our new President, Margaret presented her with the President's badge and Kate presented Margaret with beautiful bouquet of flowers from the WI.

ASTBURY ROLL OF HONOUR

Walter PARKINSON: Walter was born to Jonas and Elizabeth Parkinson (nee Carter) 22nd. February 1883 at Station Houses, Biddulph, where his father was a railway signalman at Biddulph Station. He was baptised at Congleton Edge Wesleyan Methodist Chapel 21st. October 1886. The family are still living in the station houses on the 1891 census.

By the time of the 1901 census, the family have moved to Ivy Cottage, Moreton cum Alcumlow, where his father is now a signalman at Astbury Sidings and Mow Cop and Scholar Green Station and Walter is employed as a garden labourer. In 1907 he became a signalman at Stoke station, and on the 1911 census he is a railway porter lodging at Staveley, Derbyshire. He signed up and became a rifleman in the King's Royal Rifle Corps. and was captured on the Somme in 1918 and became a prisoner of war. Thankfully he survived and by the time of the 1921 census, had married, has moved away from Moreton, moved to Bulwell, near Nottingham and was a goods guard on the Great Central Railway. He had moved to Nottingham by the time of the 1939 Register, but was still a railway guard. He sadly passed away in 1946 whilst he was employed as a railway shunter at Annersley Sidings in Nottingham.

1	2	3	4	5	6
1	2	3	4	5	6
1	a) Familienname b) Vorname (nur der Rufname) c) nur bei Russen Vorname des Vaters	Dienstgrad	a) Truppen- b) teil c) Komp.	26 SEP 1918 a) Gefangennahme b) (Ort und Tag) c) vorhergehender Aufenthaltsort	a) Geburtstag und -Ort b) Adresse des c) nächsten Verwandten
674	PARKINSON Walter 364I	Gem	9 K.R.R.	Benay 21.3.18 --- " " "	Biddulph 22.2.83 Congleton Astbury, Cheshire



Who are we? Please feel free to get in touch

Judith Critchlow (Chair) 01260 272174 (M)

Nick Plant (vice chair) 07801 545402 (A)

Carlton Evans (Clerk) 07734 808677

Andy Banks 01260 281194 (A)

Megan Bailey 01260 641292 (A)

Peter Cliff 01260 275700 (M)

Phill Critchlow 01260 272174 (M)

Sean Harrop 07900 045495 (A)

Tracey Potts 07780 310 962 (A)

Barbara Jelf 01477 500541 (M)

Ian Parry 07917 050 443 (A)

Clare Pear 07764 761475 (A)

Carrie Sutton 07979 983915 (A)

(A) - Newbold Astbury Ward

(M) - Moreton cum Alcumlow Ward

We meet in Astbury Village Hall on the 2nd. Wednesday of every month at 7.30 pm. Please feel free to come along.